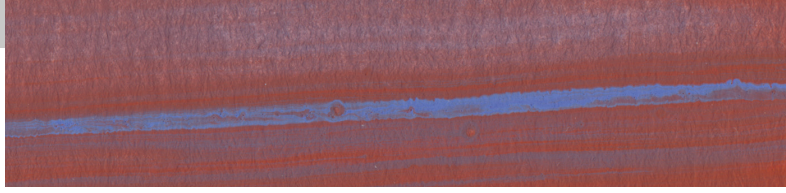




# MATERIALS & FINISHES





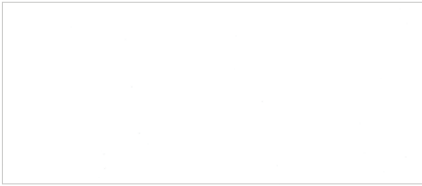
Here lives color and texture  
in materials and finishes,  
creating palettes that are  
sophisticated and modern,  
light and colorful, subtle and  
nostalgic, warm and earthy.



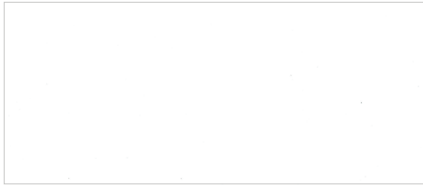


**BASE FINISHES**

**Powder Coat – Solids**



Matte White MWM



Gloss White MWG



Light Grey MLG



Medium Grey MMG



Matte Black MBM

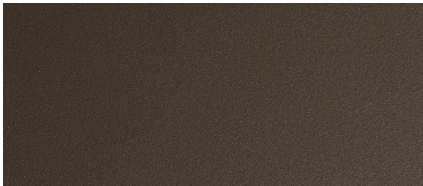


Gloss Black MBG

***Metallics***

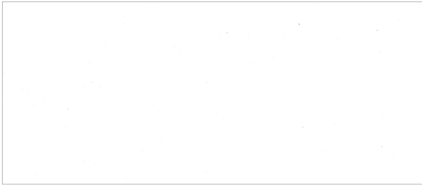


Silver MSL



Dark Bronze MDB

***Textures***



White Texture MWT



Rubbed Bronze MRB



Black Texture MBT

**Plated – Standards**



Satin Chrome MSC



Polished Chrome MPC

TABLES — *Materials & Finishes*

BASE FINISHES

---

Plated — *Premiums*



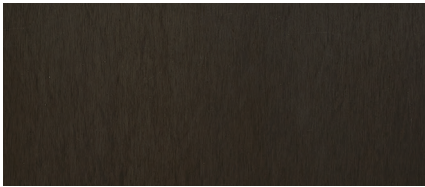
Satin Brass MSB



Polished Brass MPB



Antique Brass MAB



Blackened Brass MBB



Satin Copper MSO



Polished Copper MPO



Statuary Bronze MSZ

Aluminum



Satin Aluminum MSA



Polished Aluminum MPA

Stainless Steel

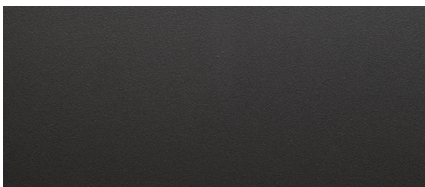


Satin Stainless Steel MSS



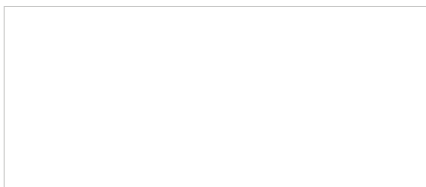
Polished Stainless Steel MPS

Hot Rolled Steel



Hot Rolled Steel MHS

Custom

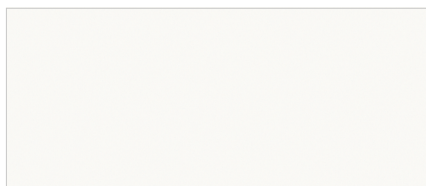


Custom Powder Coat CPC

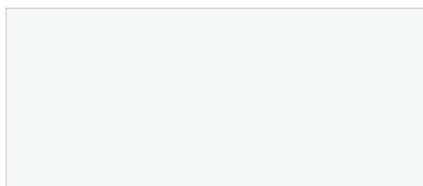


## SURFACE MATERIALS

### Laminate — Solids



Dover White LDV



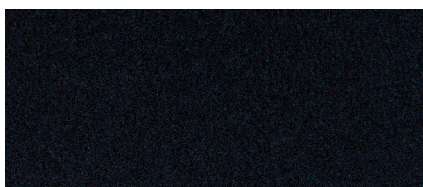
Designer White LDW



Fashion Grey LFG

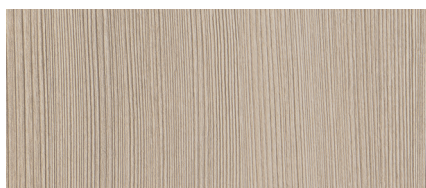


Mouse LMS



Jett Black LJB

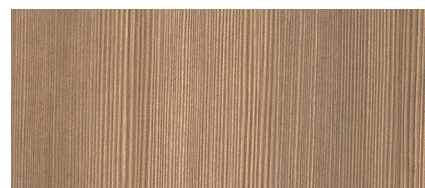
### Wood Looks



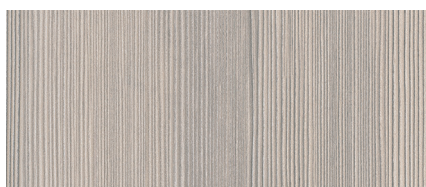
High Line LHL



Park Elm LPE



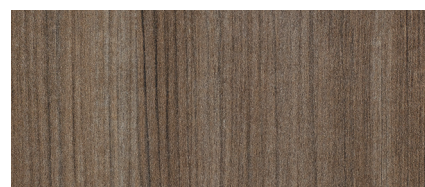
Appears Likeatre LAL



Looks Likeatre LLT



5th Ave. Elm LAE



Studio Teak LST



Sable LSB

### Patterns



Cool Chic LCC



Serene Stardom LSS



Calm Distinction LCD



Easy Elegance LEE

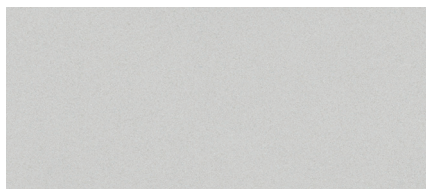
See WCI Laminate Reference Guide  
on page 18-19 for additional information.

## TABLES — *Materials & Finishes*

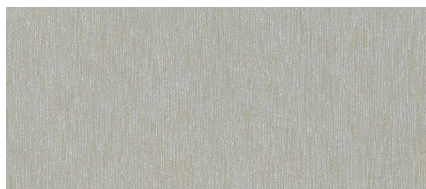
### SURFACE MATERIALS

---

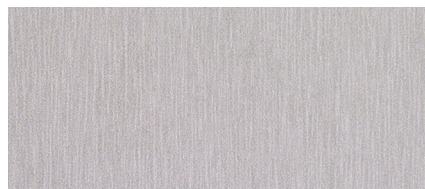
#### Laminate — *Metal Looks*



Pearl Silver LPS



Satin Oxide LSO



Silver Alu Metalx LSA

#### Wood Veneer — *Ash*



Clear Ash WCA



Natural Ash WNA



Taupe Ash WTA



Amber Ash WAA



Walnut Ash WWA



Dark Ash WDA

#### *Rift Cut Oak*



Natural Rift Oak WNO



Medium Rift Oak WMO



Dark Rift Oak WDO



Ebony Rift Oak WEO

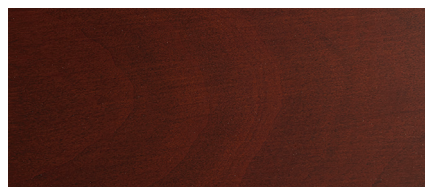
#### *Maple*



Natural Maple WNM



Golden Maple WGM



Dark Maple WDM



**SURFACE MATERIALS**

---

**Wood Veneer – *Walnut***



Natural Walnut WNW



Medium Walnut WMW



Dark Walnut WDW

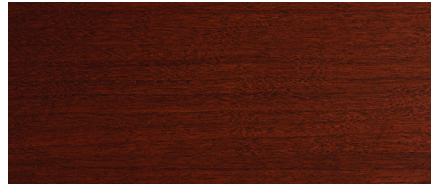
***Cherry***



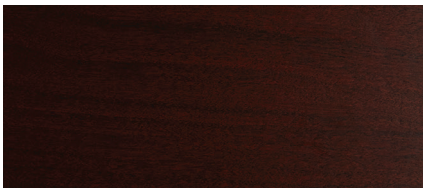
Natural Cherry WNC



Medium Cherry WMC



Dark Cherry WDC



Mahogany Over Cherry WMA

**Solid Wood**



Natural Maple BNM

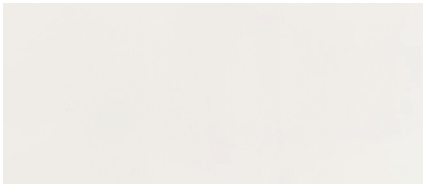


Natural Cherry Over Maple BNC



Mahogany Over Maple BMA

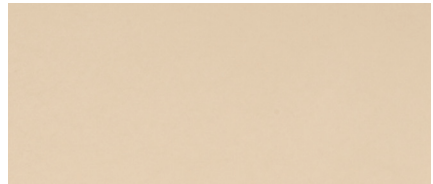
**3form® Chroma®**



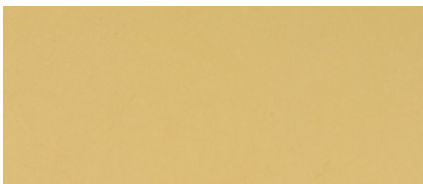
White Out FWH



Pewter FPW



Sable FSB



Camel FCA



Marmalade FMA



Atlantic FAC

TABLES — *Materials & Finishes*

SURFACE MATERIALS

3form® Chroma®



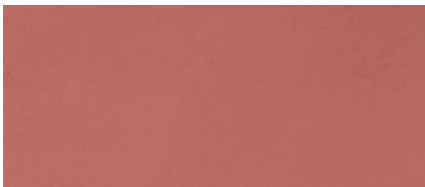
Aloe FAE



Moss FMS

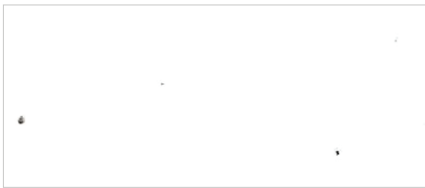


Sassy FSY



Eggplant FEG

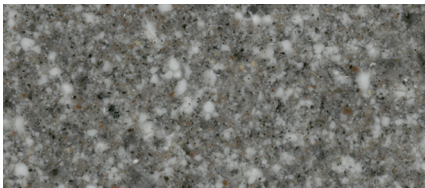
Acrylic – *Opagues*



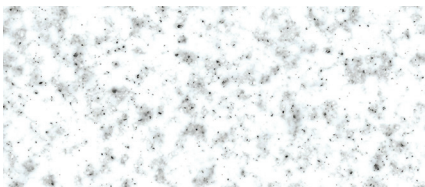
White Quartz AWQ



Khaki AKH



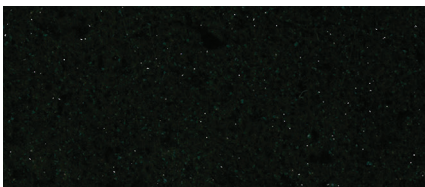
Riverstone ARS



Dove Gray ADG

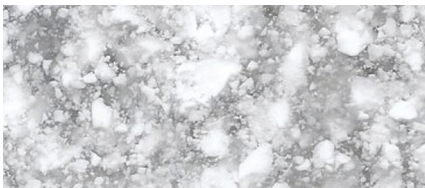


Gravel AGV



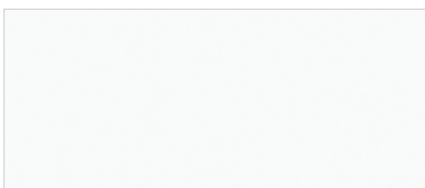
Black Rox ABR

*Translucent*

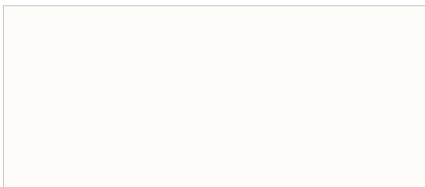


Glacier AGL

Corian – *Solids*



Designer White CDW



Glacier White CGW



Silver Gray CSG



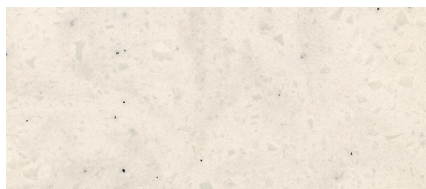
Deep Sable CDS

See WCI Solid Surface Reference Guide  
on page 20 for additional information.



## SURFACE MATERIALS

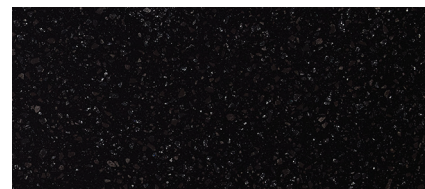
### Corian — Patterns



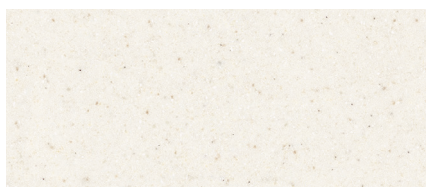
Rain Cloud CRC



Flint CFT



Deep Night Sky CNS



Linen CLN



Deep Mink CDM

### Quartz — Caesarstone® (Q1)



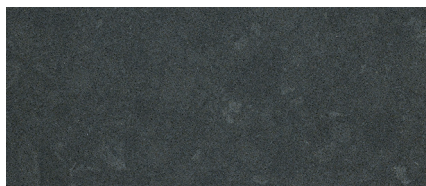
Ocean Foam QOF



Pebble QPB

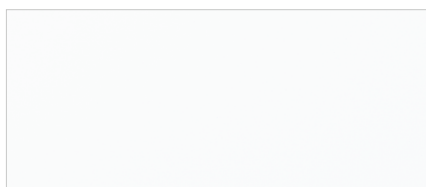


Concrete QCT

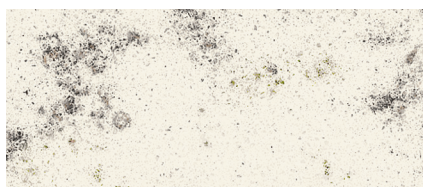


Raven QRV

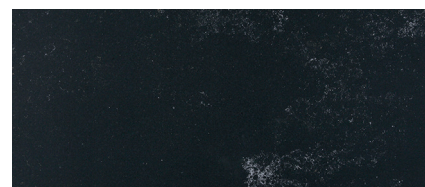
### Quartz — Okite® (Q2)



Bianco Assoluto QBA



Bianco Carrara QBC



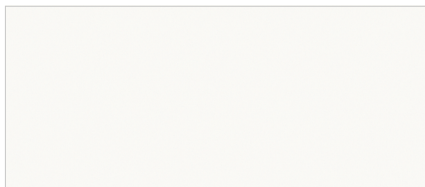
Nero Reale QNR

## TABLES — *Materials & Finishes*

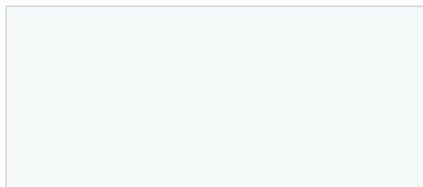
### EDGE MATERIALS

---

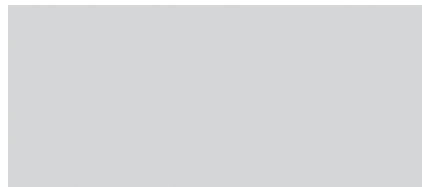
#### Laminate — *Solids*



Dover White LDV



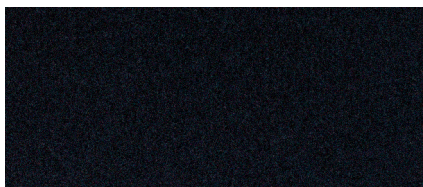
Designer White LDW



Fashion Grey LFG

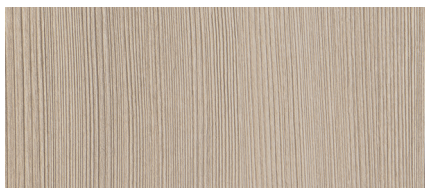


Mouse LMS



Jett Black LJB

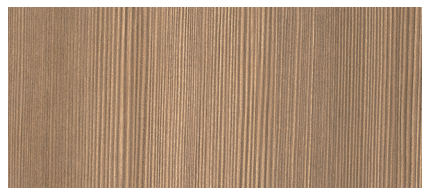
#### Wood Looks



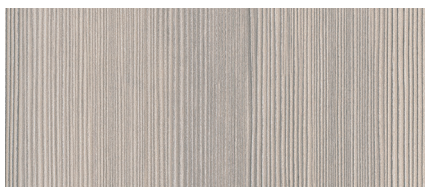
High Line LHL



Park Elm LPE



Appears Likeatre LAL



Looks Likeatre LLT



5th Ave. Elm LAE



Studio Teak LST



Sable LSB

#### Patterns



Cool Chic LCC



Serene Stardom LSS



Calm Distinction LCD



Easy Elegance LEE

See WCI Laminate Reference Guide  
on page 18-19 for additional information.



EDGE MATERIALS

Laminate – *Metal Looks*



Pearl Silver LPS

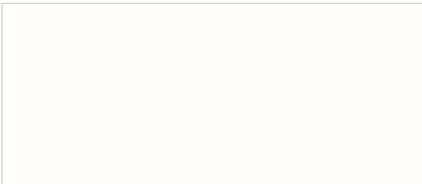


Satin Oxide LSO

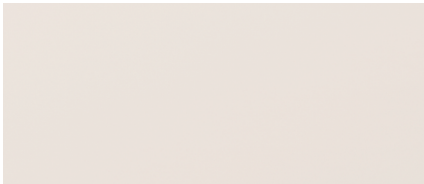


Silver Alu Metalx LSA

Vinyl & PVC



Frosty White VFW



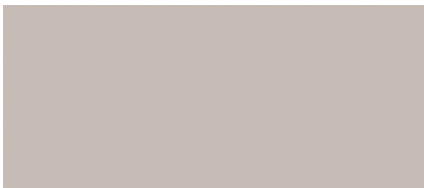
Surf VSR



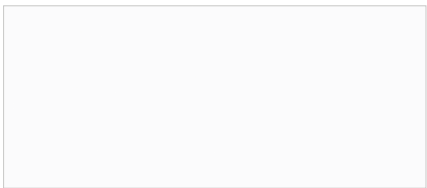
Pepperdust VPD



Tan VTN



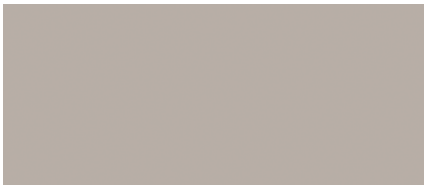
Grey VGY



Designer White VWH



Fashion Grey VFG



Fog VFO



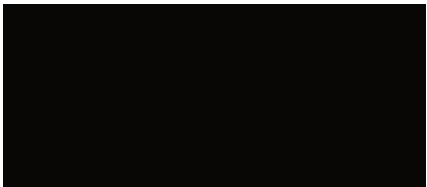
North Sea VNS



Graphite VGP



Slate Grey VSG



Black VBK

TABLES — *Materials & Finishes*

EDGE MATERIALS

---

Wood Veneer – *Ash*



Clear Ash WCA



Natural Ash WNA



Taupe Ash WTA



Amber Ash WAA



Walnut Ash WWA



Dark Ash WDA

*Rift Cut Oak*



Natural Rift Oak WNO



Medium Rift Oak WMO



Dark Rift Oak WDO



Ebony Rift Oak WEO



EDGE MATERIALS

---

Wood Veneer — *Maple*



Natural Maple MNM



Golden Maple MGM



Dark Maple WDM

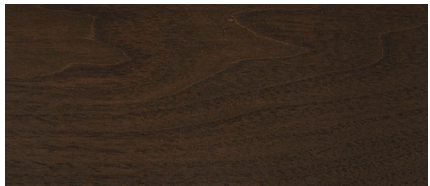
*Walnut*



Natural Walnut WNW



Medium Walnut WMW



Dark Walnut WDW

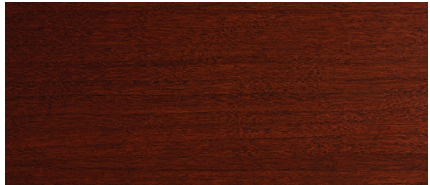
*Cherry*



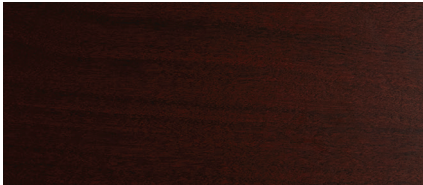
Natural Cherry WNC



Medium Cherry WMC



Dark Cherry WDC



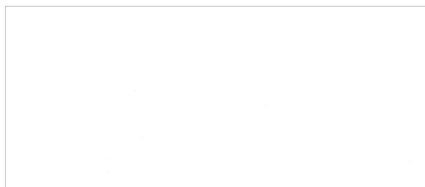
Mahogany Over Cherry WMA

## TABLES — *Outdoor Materials & Finishes*

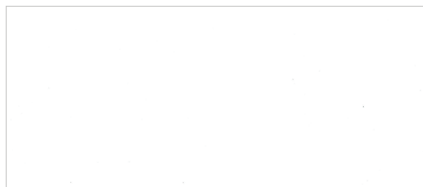
### BASE FINISHES

---

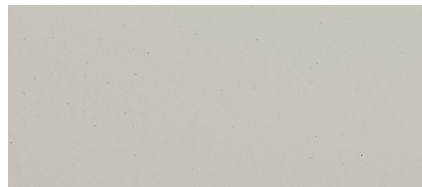
#### Powder Coat — *Solids*



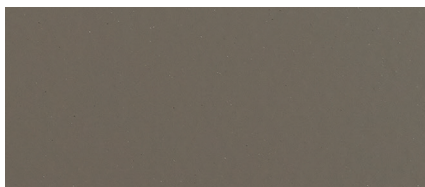
Matte White MWM



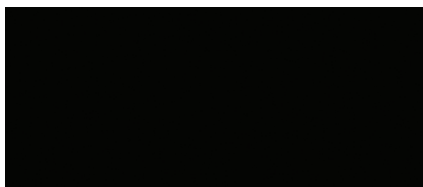
Gloss White MWG



Light Grey MLG



Medium Grey MMG



Matte Black MBM

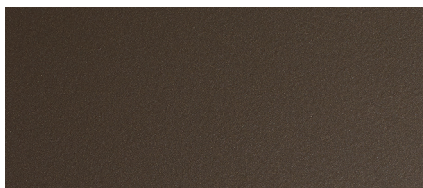


Gloss Black MBG

#### *Metallics*

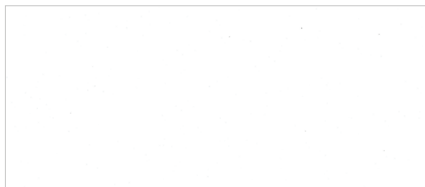


Silver MSL



Dark Bronze MDB

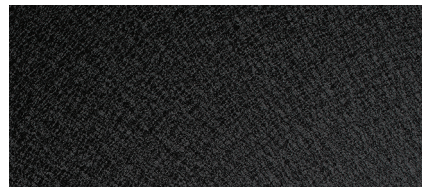
#### *Textures*



White Texture MWT

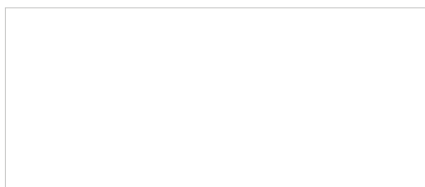


Rubbed Bronze MRB



Black Texture MBT

#### Custom



Custom Powder Coat CPC



Satin Aluminum MSA

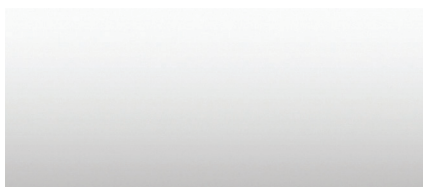


Polished Aluminum MPA

#### Stainless Steel (not applicable on all tables)



Satin Stainless Steel MSS

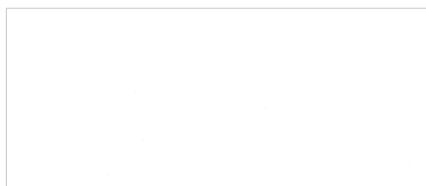


Polished Stainless Steel MPS



## SURFACE MATERIALS

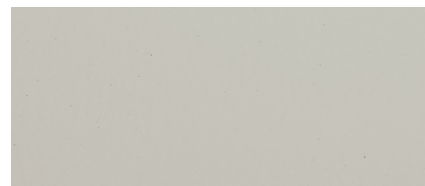
### Powder Coat – Solids



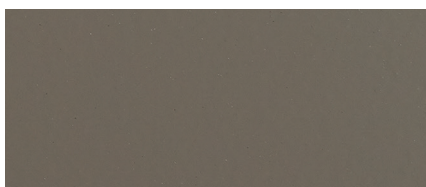
Matte White MWM



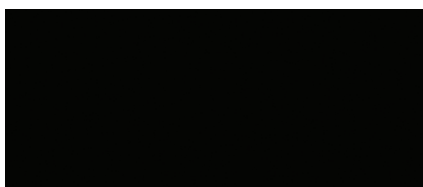
Gloss White MWG



Light Grey MLG



Medium Grey MMG



Matte Black MBM

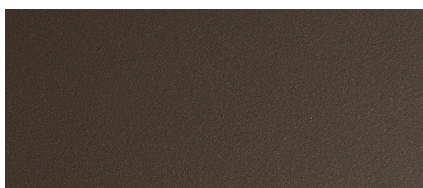


Gloss Black MBG

### Metallics



Silver MSL



Dark Bronze MDB

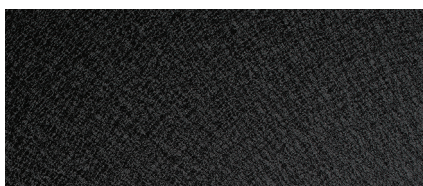
### Textures



White Texture MWT



Rubbed Bronze MRB

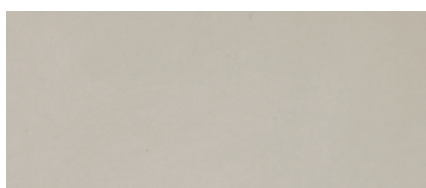


Black Texture MBT

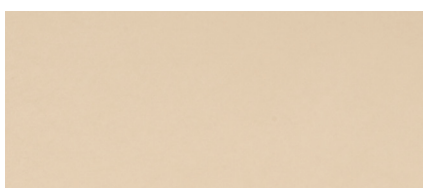
### 3form® Chroma®



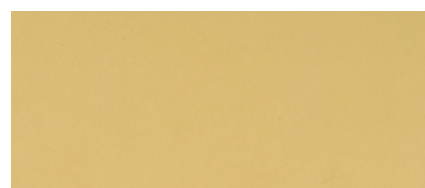
White Out FWH



Pewter FPW



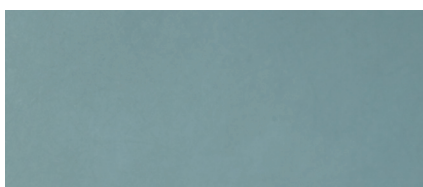
Sable FSB



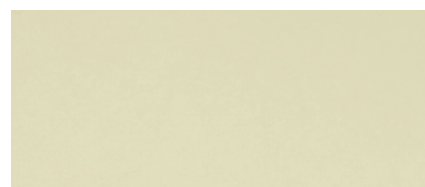
Camel FCA



Marmalade FMA



Atlantic FAC



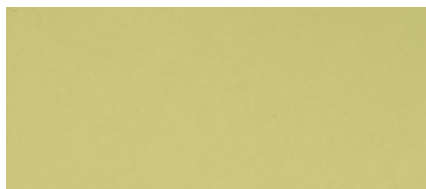
Aloe FAE

See WCI Solid Surface Reference Guide on page 20 for additional information.

## TABLES — Outdoor Materials & Finishes

### SURFACE MATERIALS

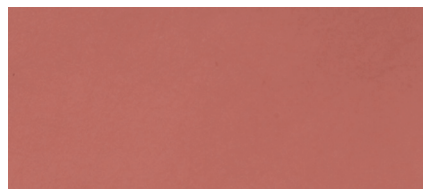
#### 3form® Chroma®



Moss FMS

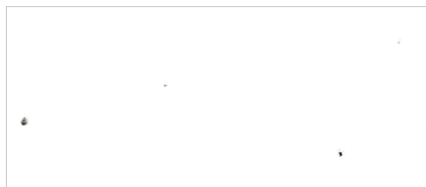


Sassy FSY

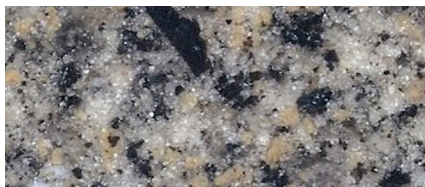


Eggplant FEG

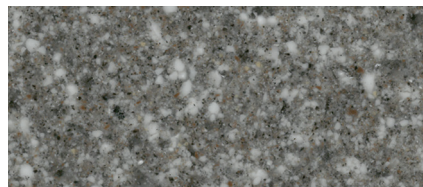
#### Acrylic – Opaques



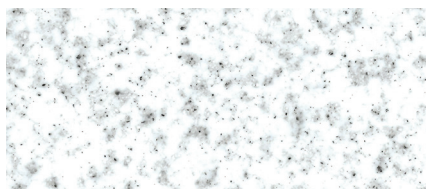
White Quartz AWQ



Khaki AKH



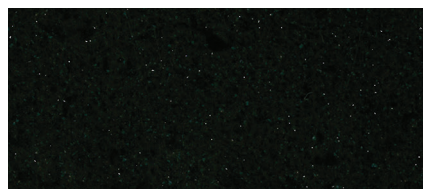
Riverstone ARS



Dove Gray ADG

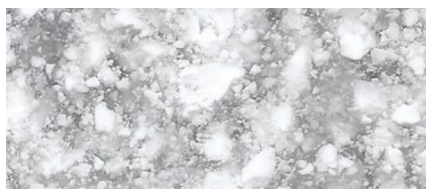


Gravel AGV



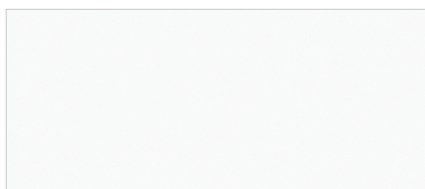
Black Rox ABR

#### Translucent

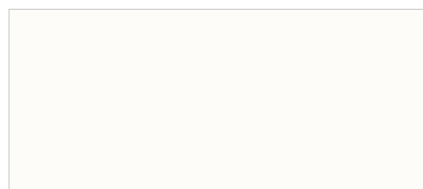


Glacier AGL

#### Corian – Solids



Designer White CDW



Glacier White CGW

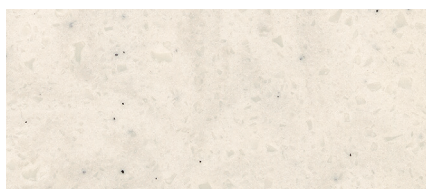


Silver Gray CSG



Deep Sable CDS

#### Corian – Patterns



Rain Cloud CRC



Flint CFT



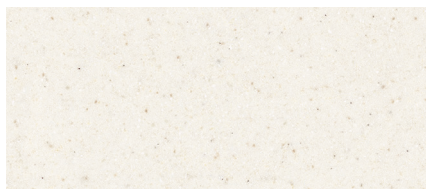
Deep Night Sky CNS

See WCI Solid Surface Reference Guide  
on page 20 for additional information.



## SURFACE MATERIALS

### Corian — Patterns

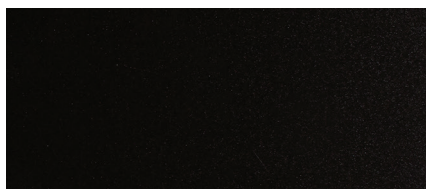


Linen CLN



Deep Mink CDM

### Metal — Solid



Metal Solid MES

### Metal — Mesh



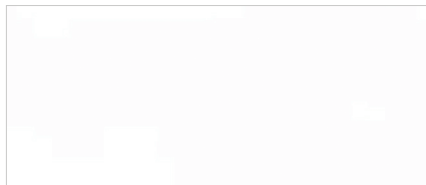
Metal Mesh, Bistro MEM



Metal Mesh, Park MEM

## CHAIR MATERIALS

### Polypropylene



White PWH

### Synthetic Rattan



Honey RHN



Black RBK

### Frame Finishes — Aluminum



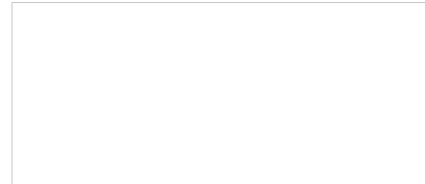
Polished Aluminum MPA

### Powder Coat



Silver MSL

### Custom



Custom Powder Coat CPC

## TABLES — Laminate Reference Guide

WCI's standard laminate palette offers 19 solid, wood look, patterned, and metal look laminates all of which are available at standard pricing and lead times.

Materials	Manufacturer Code	Manufacturer Name	WCI Code
<b>Solids</b>			
Formica	7197-58	Dover White	LDV
Wilsonart	D354-60	Designer White	LDW
Wilsonart	D381-60	Fashion Grey	LFG
Formica	928-58	Mouse	LMS
Nevamar	S6053T	Jett Black	LJB
<b>Wood Looks</b>			
Wilsonart	7970K-18	High Line	LHL
Wilsonart	7967K-12	Park Elm	LPE
Pionite	WP115	Appears Likeatre	LAL
Pionite	WP110	Looks Likeatre	LLT
Wilsonart	7966K-12	5th Ave. Elm	LAE
Wilsonart	7960K-18	Studio Teak	LST
Pionite	AG021	Sable	LSB
<b>Patterns</b>			
Nevamar	VA7002T	Cool Chic	LCC
Nevamar	VA5001T	Serene Stardom	LSS
Nevamar	VA6001T	Calm Distinction	LCD
Nevamar	VA5002T	Easy Elegance	LEE
<b>Metal Looks</b>			
Wilsonart	D487-07	Pearl Silver	LPS
Wilsonart	4832K-07	Satin Oxide	LSO
Nevamar	MXT003T	Silver Alu Metalx	LSA

**Standard Laminates:** WCI offers 19 standard laminates including: Formica, Nevamar, Pionite, and Wilsonart. To see an expanded offering, please visit the laminate manufacturers' websites at:

formica.com  
 nevamar.com  
 pionite.com  
 wilsonart.com

Non-standard laminates from Formica, Nevamar, Pionite, and Wilsonart are also available. Non-standard WCI laminates will incur a minimum of \$150 list set-up charge per laminate color. Please contact WCI Customer Service at 844-815-2217 for all special laminate requests.

**Premium Laminates:** Other laminates from these manufacturers or laminates from other manufacturers are available, such as Arborite®, Laminart®, and Abet Laminati®. These require a special pricing; please contact WCI's Customer Service Department at 844-815-2217 for all special laminate requests.



Standard Laminates

Vinyl/PVC Edges

	Manufacturer	Manufacturer Code	WCI Code	Name	VFW Frosty White	VSR Surf	VPD Pepperdust	VTN Tan	VGY Grey	VWH Designer White	VFG Fashion Grey	VFO Fog	VNS North Sea	VGP Graphite	VSG Slate Grey	VBK Black
Solids	Formica	7197-58	LDV	Dover White	P											
	Wilsonart	D354-60	LDW	Designer White						P						
	Wilsonart	D381-60	LFG	Fashion Grey							P					
	Formica	928-58	LMS	Mouse									P			
	Nevamar	S6053-T	LJB	Jett Black												P
Wood Looks	Wilsonart	7970K-18	LHL	High Line				P								
	Wilsonart	7967K-12	LPE	Park Elm				P								
	Pionite	WP115	LAL	Appears Likeatre				P								
	Pionite	WP110	LLT	Looks Likeatre			P		C							
	Wilsonart	7966K-12	LAE	5th Ave. Elm					P							
	Wilsonart	7960K-18	LST	Studio Teak											P	
	Pionite	AG021	LSB	Sable										P		C
Patterns	Nevamar	VA7002T	LCC	Cool Chic		P										
	Nevamar	VA5001T	LSS	Serene Stardom									P			
	Nevamar	VA6001T	LCD	Calm Distinction									P			
	Nevamar	VA5002T	LEE	Easy Elegance										C	P	C
Metal Looks	Wilsonart	D487--07	LPS	Pearl Silver							P					
	Wilsonart	4832K-07	LSO	Satin Oxide			P					C				
	Nevamar	MXT003T	LSA	Silver Alu Metalx								P	C			

P : Primary Match (recommended)

C : Compatible Match (alternative)

## TABLES — Solid Surface Reference Guide

### 3form® Chroma®

3form® Chroma® is a solid surface material produced from optical grade engineered resin providing luminous color for horizontal table top applications. Ideal for high-end detail with a minimalist design aesthetic.

WCI 3form® Standard Colors	WCI Code
White Out	FWH
Pewter	FPW
Sable	FSB
Camel	FCA
Marmalade	FMA
Atlantic	FAC
Aloe	FAE
Moss	FMS
Sassy	FSY
Eggplant	FEG

3form® Chroma® tops are sold separately. Custom size and shape tops and additional colors are available and require special pricing from WCI's Customer Service Department. A minimum of five 3form® Chroma® tops is required, per color, for non-standard 3form® Chroma® top orders. Please contact WCI Customer Service at 844-815-2217 for all special 3form® Chroma® requests. To order samples or to see an expanded offering, please visit 3form's website: <https://www.3-form.com/order/>

### Corian®

Corian® is a solid surface material created by DuPont, composed of acrylic polymer and alumina trihydrate. Corian® is available in a vast range of trendsetting patterns and tones.

WCI Corian® Standard Colors	WCI Code
Designer White	CDW
Silver Gray	CSG
Rain Cloud	CRC
Flint	CFT
Deep Night Sky	CNS
Glacier White	CGW
Linen	CLN
Deep Mink	CDM
Deep Sable	CDS

Corian® tops are not sold separately as a standard product. All top-only requests must be processed as a custom product. Steel sub-frames are designed to fit only WCI's standard bases. A minimum of five Corian® tops, per color, is required for non-standard Corian® top orders. To see an expanded offering, please visit Corian's website: [www.dupont.com](http://www.dupont.com)



**Caesarstone® Quartz and Okite® Quartz**

Engineered stone tops offer one of the most durable stone composite surfaces. They are one of the toughest yet most beautiful of all minerals and have the look and feel of stone offering a more non-porous, scratch-resistant, stain-resistant and heat-resistant properties.

**Q1**

WCI Caesarstone® Standard Colors	Manufacturer Code	WCI Code
Ocean Foam	6141	QQF
Pebble	4030	QPB
Concrete	2003	QCO
Raven	4120	QRV

**Q2**

WCI Okite® Standard Colors	Manufacturer Code	WCI Code
Bianco Assoluto	1665	QBA
Bianco Carrara	1896	QBC
Nero Reale	1804	QNR

Quartz tops are not sold separately as a standard product. The material is only available for the following tables:

Basic Round  
 Blok  
 Disc  
 Flat Round  
 Kone  
 Platform  
 Platform Double  
 Regency  
 Tulip  
 Vista

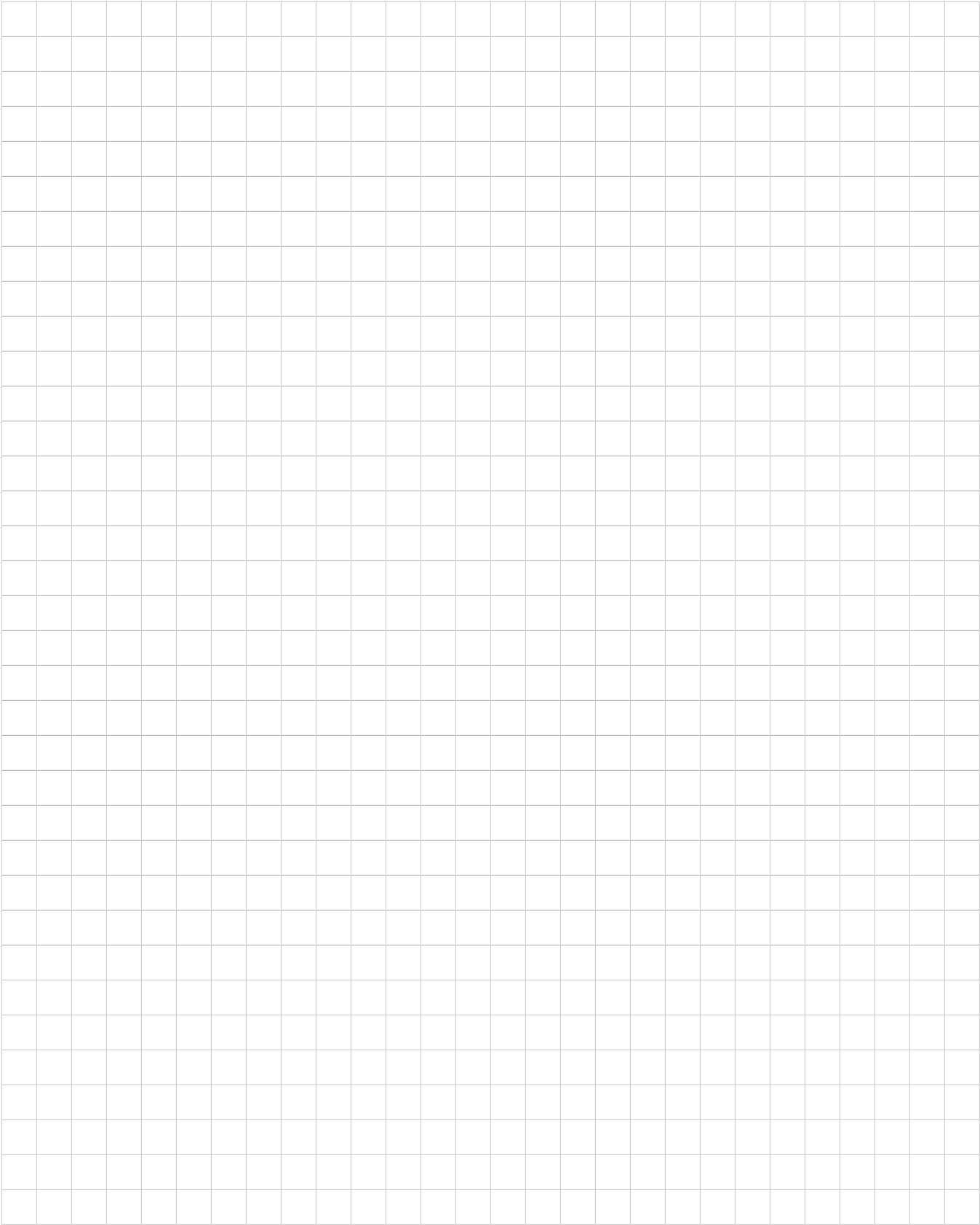
Our standard quartz top offering features Okite® and Caesarstone® and is composed of up to 93% natural quartz and polymer resin. A minimum of five quartz tops, per color, is required for non-standard quartz top orders.

To see an expanded offering, please visit the manufacturers' websites.

Caesarstone®: [caesarstoneus.com/products](https://caesarstoneus.com/products)

Okite®: [okite.com/us/prodotti](https://okite.com/us/prodotti)

# CREATE



CREATE WITH US

The traditional. The unexpected.  
*The reimagined.*





