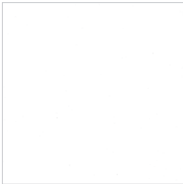


# Base Finishes

## Powder Coat | Solids



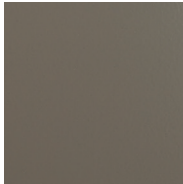
Matte White MWM



Gloss White MWG



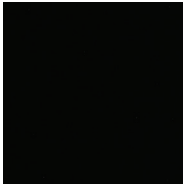
Light Grey MLG



Medium Grey MMG



Matte Black MBM

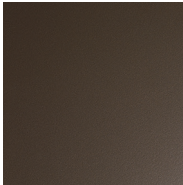


Gloss Black MBG

## Metallics



Silver MSL

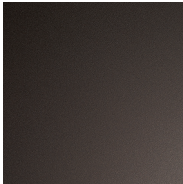


Dark Bronze MDB

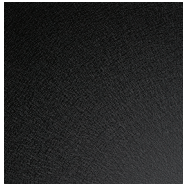
## Textures



White Texture MWT



Rubbed Bronze MRB



Black Texture MBT

# Base Finishes

---

## Plated | Standards



Satin Chrome **MSC**



Polished Chrome **MPC**

## Premiums



Satin Brass **MSB**



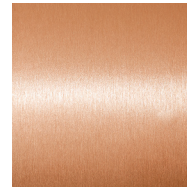
Polished Brass **MPB**



Antique Brass **MAB**



Blackened Brass **MBB**



Satin Copper **MSO**



Polished Copper **MPO**



Statuary Bronze **MSZ**

---

## Aluminum



Satin Aluminum **MSA**



Polished Aluminum **MPA**

## Stainless Steel



Satin Stainless Steel **MSS**



Polished Stainless Steel **MPS**

## Hot Rolled



Hot Rolled Steel **MHS**